
COUNTY OF SAN LUIS OBISPO
GROUNDWATER SUSTAINABILITY
Blaine Reely Director

Re: Paso Robles Groundwater Basin – Monitoring Well Network Expansion

Dear Property Owner:

You are receiving this informational letter because the groundwater well(s) on your property are integral to the development of a robust network of monitoring wells throughout the Paso Robles Groundwater Basin. A monitoring well is a groundwater well that is manually measured or may have equipment installed to periodically collect data on groundwater levels.

The purpose of expanding the monitoring well network in the Paso Basin is to help local Groundwater Sustainability Agencies (GSAs) better understand the conditions of the basin. This information will play a critical role in helping our basin GSAs achieve sustainability and meet state requirements under the Sustainable Groundwater Management Act.

Your GSA representatives, including San Luis Obispo County, are in the process of expanding the active network of 23 wells to approximately 200 wells. This network is included as a map on the flyer accompanying this letter.

In the coming weeks, representatives working on behalf of the basin GSAs will contact you directly to schedule a visit to discuss the monitoring program, measurement options at your well and a formal agreement to add your well to the network. **All access to your well, including the sharing of collected data, is voluntary.** You will not bear any costs for participating and will own all the data collected, which will strictly be used for groundwater basin monitoring and to assist in groundwater management in the basin. The data collected will only be shared with the GSAs with your explicit permission.

With your assistance, your well(s) can help us track seasonal fluctuations in groundwater levels, make informed decisions and meet future water supply needs for all residents over the basin. If you have any questions or would like to discuss this opportunity in more detail, please email GW_Groundwater@co.slo.ca.us or call 805-781-4206.

COUNTY OF SAN LUIS OBISPO



Blaine T. Reely, PhD, PE
Director – Groundwater Sustainability

PASO ROBLES GROUNDWATER BASIN MONITORING WELL NETWORK EXPANSION

Your Help is Needed

OUR SHARED BASIN

- The Paso Robles Groundwater Basin is critically overdrafted and categorized as a high priority basin by the Department of Water Resources
- Five local Groundwater Sustainability Agencies (GSAs) are working to bring the Basin into sustainability by 2040 as required by the Sustainable Groundwater Management Act (SGMA)

OBJECTIVES

- Expand the groundwater level monitoring network to fill data gaps
- Obtain access agreements from property owners such as yourself, to provide staff an opportunity to measure groundwater levels
- Develop a robust water level network to improve the understanding of groundwater and our aquifer system

YOUR BENEFITS

- Receive accurate groundwater level readings from your well
- Track the seasonal and long-term groundwater level trends for your well
- Own all data collected
- Help our community better understand our groundwater and achieve our commitment to sustainability

WHAT WE NEED FROM YOU

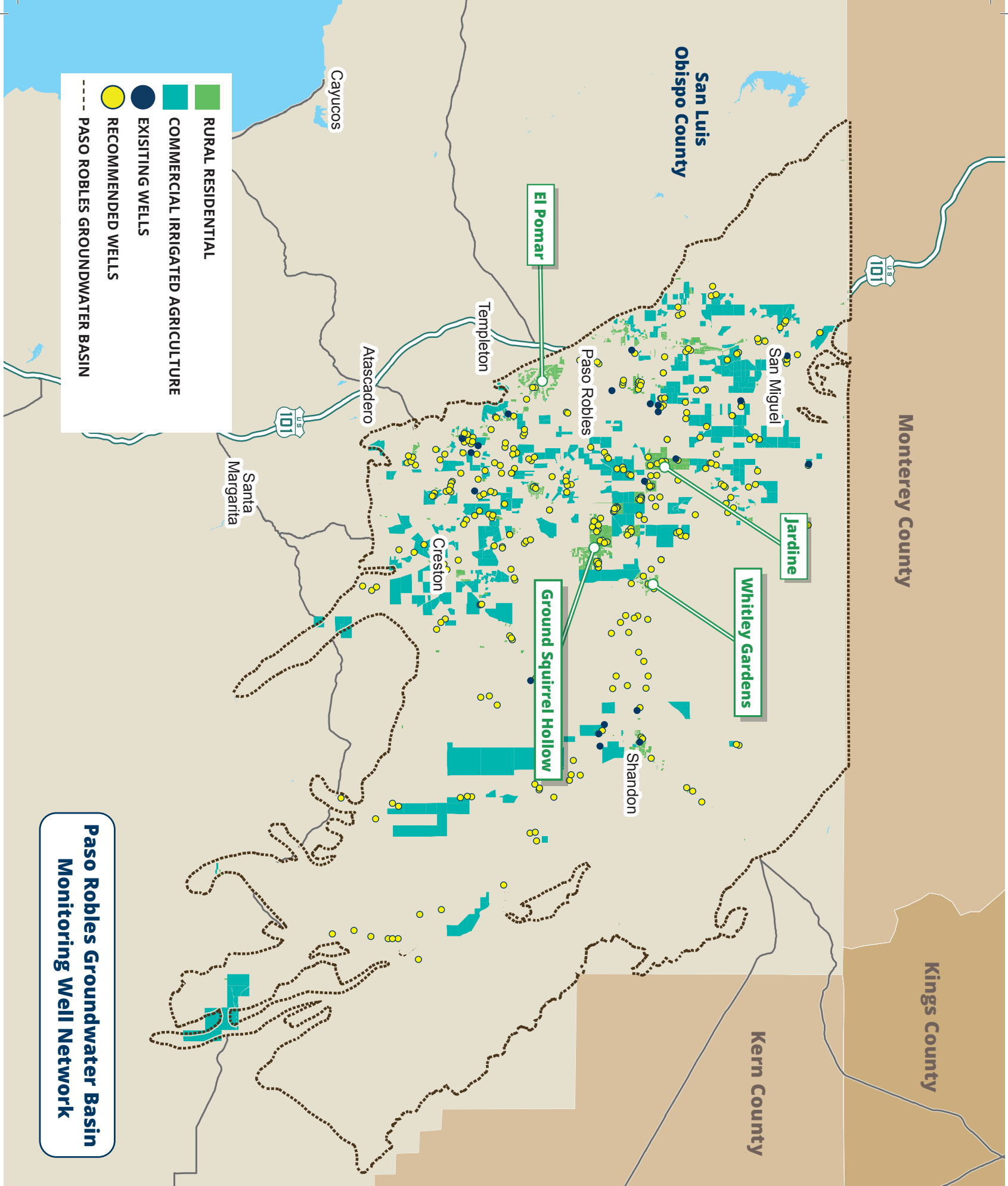
- Provide access to your well for water level measurements
- Sign an access agreement to allow staff to measure the water level in your well



WHAT WE DO WITH THE WATER LEVEL DATA

- Water level measurements are added to the internal San Luis Obispo County database and used with about 200 other water levels throughout the Basin to model and track changes
- Annual Basin-wide reporting
- Improve our groundwater model
- Groundwater levels are shared with the GSAs and their consultants that are hired to help our communities achieve sustainability
- Groundwater levels throughout the entire network may be displayed on an interactive map and posted online
- Only data that you specifically agree to will be shared

For more information, email GW_Groundwater@co.slo.ca.us
or visit SLOCounty.CA.Gov/PasoBasin



- RURAL RESIDENTIAL
- COMMERCIAL IRRIGATED AGRICULTURE
- EXISTING WELLS
- RECOMMENDED WELLS
- PASO ROBLES GROUNDWATER BASIN

**Paso Robles Groundwater Basin
Monitoring Well Network**

For more information, email GW_Groundwater@co.slo.ca.us
or visit SLOCounty.CA.Gov/PasoBasin